



Villa Verde



P L O V D I V

All your dreams



In Villa Verde



Plovdiv

Plovdiv is the second largest city in Bulgaria with a population of about 380,000 people and a metropolitan area of 500,000 people. It is also one of the oldest cities in Europe

Plovdiv is located in the Thracian plain in southern Bulgaria some 130 kilometers from Sofia, the capital. The city was built on seven hills along the two banks of the Maritza River. Plovdiv is situated in an important, strategic location. Major international routes pass through the city and drive its commerce and growth.

These routes connect the east with Europe, the Baltic and the Mediterranean. They also connect the black sea with the Adriatic. The Trakia highway which is only 10 km from the city center connects west Europe with Istanbul and the Middle East. It will also eventually connect Sofia to the black sea port of Bourgas via Plovdiv.

Plovdiv old town embodies the city's long and varied history – Thracian fortifications overlaid with Byzantine walls and great mansions erected during the period of the Bulgarian Renaissance look down on the Ottoman mosques and Artisans dwellings of the lower town. The city's festivals

and trade fairs rival Sofia in number and its world famous restaurants and charming promenade compare very favorably with those in the capital.

Plovdiv airport is an expanding international passenger and cargo terminus. Major upgrades have taken place in recent years together with increasing investments in expanding airport infrastructure to facilitate growing demand.

The city is well known for the quality of its educational facilities and offers one of the highest ratios of universities places to population in south east Europe, with six different universities and a number of state and private colleges and branches of other universities.

The Exhibition ground in Plovdiv is the biggest in south east Europe. It has major trade fairs which are held throughout the year.

Plovdiv has many historical attractions such as the Roman stadium, Filipopolis forum and statue perched on the three hills from where you can see the most spectacular views of the city, together with the walls of the fortress Filipopolis,

the unique roman theatre and the majestic Sahat Tepe with its clock tower.

Plovdiv is also well known for its sports facilities and parks. The sports complex is the biggest in Eastern Europe and consists of the Plovdiv stadium with several football fields, tennis courts, swimming pools, rowing center with 3 km long channel and restaurants and cafes situated in a spacious park in the western part of the city just south of the Maritza River. There are also playgrounds for children.

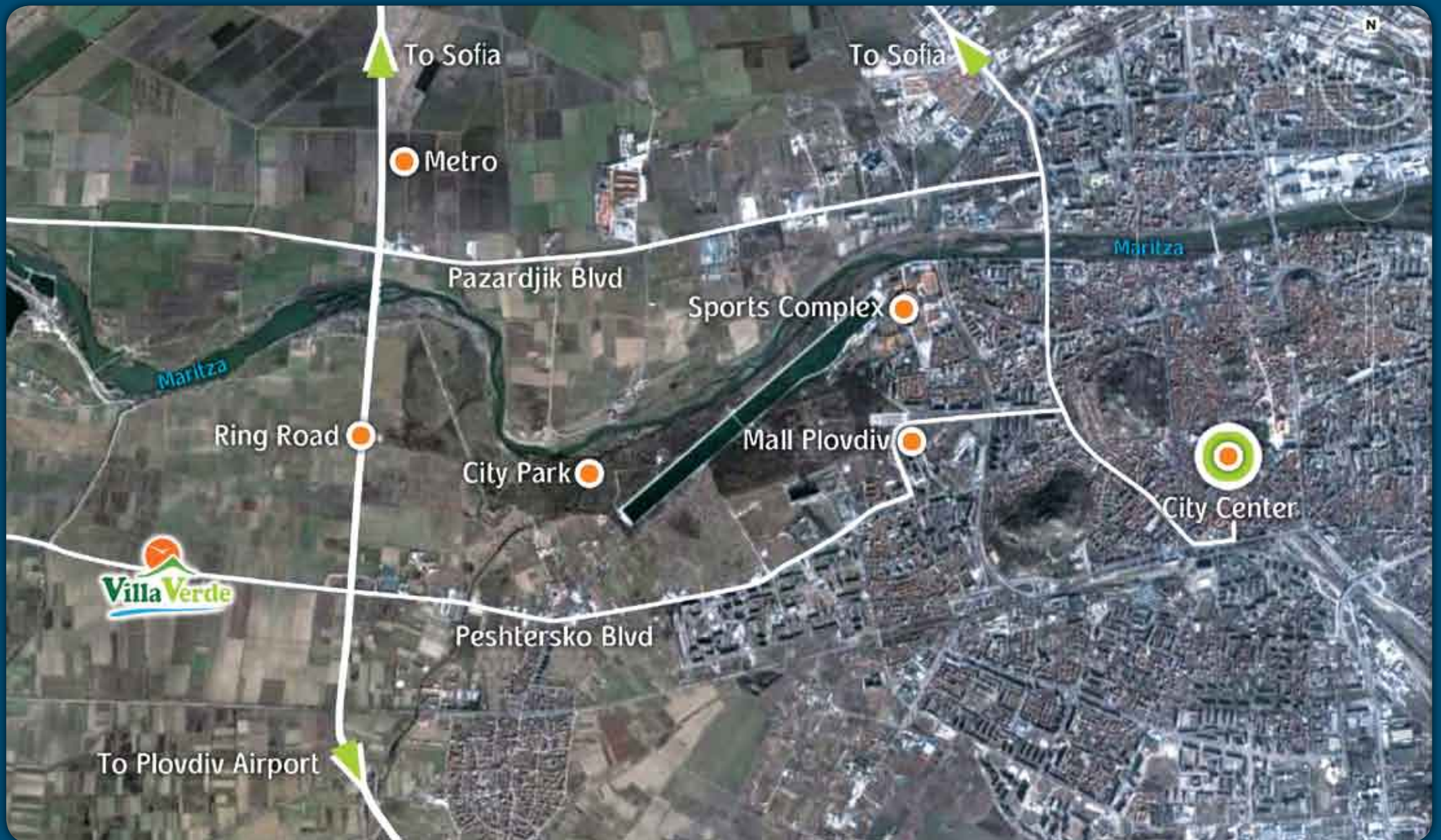
The presence of the Maritza River, flowing through the city has contributed to the mysterious and romantic appearance of the city besides being a favorite place for the keen fisherman and water sport lovers.

Plovdiv's surroundings are also extremely rich with cultural-historical landmarks as well as natural-ecological resorts such as the Rodophi mountains with its lakes, forests, waterfalls and wild nature and of course Pomporovo ,one of Bulgarias most popular ski resorts which is only 80 km from Plovdiv.





Plovdiv Map



Villa Verde



This green, unique and charming gated community development is planned on a 125,000 m² site situated on the west side of Plovdiv only 6 kilometers from the center of the city. The site is located only a one minute drive from the road junction of two major roads that service the area. The first is the Plovdiv Ring Road which starts at the Plovdiv junction to the Sofia motorway and continues to the southern part of the city.

The second is the Peshtersko Shosse Blvd which links the development location to the airport (approximately 25 kilometers from Villa Verde) via the south eastern areas of the city. The location of Villa Verde ensures direct, fast and easy access to all parts of Plovdiv, Sofia and elsewhere.

Villa Verde is one of the finest private housing developments planned in Bulgaria. The quality of the development offers a once in a lifetime opportunity to live in the highest standard of living inside a private housing community

with a truly green, clean environment, embracing nature, yet still being close enough to easily enjoy all of the facilities of the city center.

The development is situated in a quiet area of enchanting tranquility. It is surrounded by natural scenery such as the Maritza River which is only a 10 minute walk! From the south you can enjoy views of the Rodophi Mountains which are one of Bulgaria's nature reserves with its majestic lakes, forests, waterfalls and large quantity of wild animals. It is also the location of the famous Pamporovo ski resort which is only a little more than an hour drive from Plovdiv. From the west, just 7 minutes drive you will find the famous Krichim National park which is a favorite location of the inhabitants of the region. The forest and rivers of the park make it a favorite picnic location. In Villa Verde you can truly live in a peaceful world of greenery and nature and still be only 7-10 minutes drive to the city park, sports complex, the new modern Mall of Plovdiv, and the city center.



A scenic landscape featuring a wide river in the foreground, surrounded by lush green trees and rolling hills. The background shows more distant hills under a clear blue sky. The overall scene is peaceful and natural.

**This natural beauty
is only five minutes drive
from Villa Verde**

The Development



Villa Verde has been carefully planned as a modern gated housing neighborhood with the highest standard of living. It comprises approximately 400 units and features many different types of houses with extremely flexible possibilities with regard to sizes, house types and sizes of gardens, the possibility of enlarging the house in the future and location inside the project with varying exposures.

Villa Verde is designed to have different types of housing types including row houses in combinations of 3 to 6 units, detached houses, large duplexes with private entrances (two duplexes for each entrance) and spacious private villas with swimming pools. The project has a large central garden with lots of greenery and open spaces together with playgrounds for the children

with plentiful seating for the parents and their guests. It also features a private kindergarden which will serve the children living in Villa Verde. At the entrance of the project you will find a commercial center that is intended to serve the daily requirements of the residents of the project with a wide variety of shops such as a supermarket, cafes, restaurants, dry cleaning service, pharmacy, bank, spa, health club, medical services etc.

Villa Verde features designated bicycle trails inside the project along the internal roads. It is planned to have a private management company which will maintain the public spaces and gardens within the development with a close personal touch to ensure a high standard of living for everybody privileged to live in Villa Verde.



Attractions near Villa Verde



pedestrian precinct



Plovdiv city park



Rodopi mountains



Plovdiv's major sports complex



Krichim national park



Mall of Plovdiv